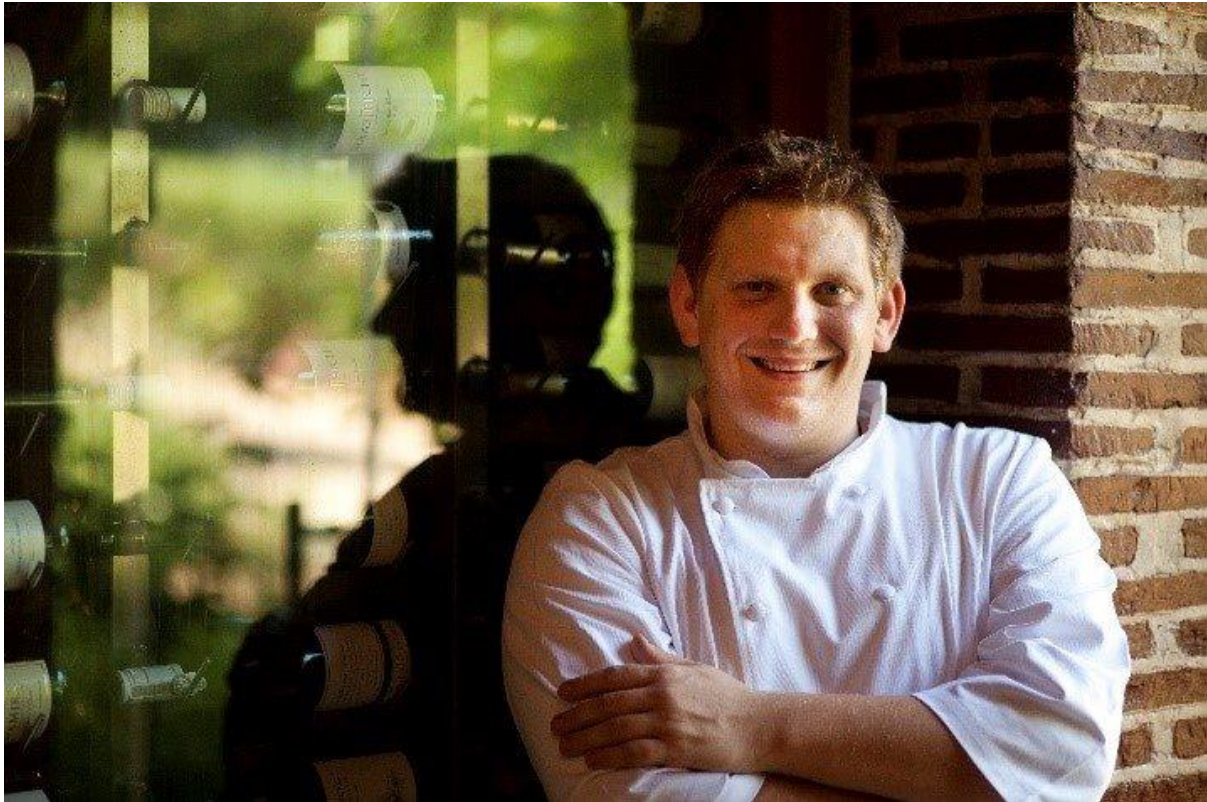


## NEW EXECUTIVE HEAD CHEF APPOINTMENT AT NEW BATH HOTEL AND SPA.



The New Bath Hotel and Spa, Matlock Bath, Derbyshire, is delighted to announce the appointment of new Executive Head Chef John Shuttleworth. John brings with him previous Head Chef experience at three Rosette and Michelin level. John starts our new culinary journey from January 2018.

As a local lad from Heage, John Shuttleworth discovered his passion for cooking at the early age of 13 when baking bread with his grandmother. After graduating from High Peak College in Buxton, he started his professional career in the USA for one year and returned to England. He went on to work in Michelin starred establishments such as Mallory Court and Glenapp Castle. It was at Glenapp where John met his future wife, Andrea, who worked in Front of House.

Relocating to Andrea's home country of South Africa in 2008 he joined Rust en Vrede, a premium winery in Stellenbosch with a highly acclaimed restaurant. As Head Chef, he and Andrea worked for 8 years. John has always aspired to achieve success in his home country which led to the family recently returning to the UK.

Their appointment to the New Bath Hotel and Spa aims to lift the culinary offer to new heights. The menu will reflect his love for the area, fine produce and classical training with contemporary influences from his experiences and travels. Expect balanced dishes of flavour and texture....and a bit of fun!

Full address: New Bath Hotel and Spa, New Bath Road, Matlock Bath, Matlock, Derbyshire

Reservations: 01693 340 340 Website: [www.newbathhotelandspa.com](http://www.newbathhotelandspa.com)

Social : <https://www.facebook.com/NewBathHotelandSpa>

For further press information, contact:

Alison Pye – Director of Sales and Marketing

Tel: 0207 584 5252; or Email: [alison@newbathhotelandspa.com](mailto:alison@newbathhotelandspa.com)

Editor's Note:

The New Bath Hotel and Spa completed a major restoration and is now Derbyshire's premier boutique hotel. With 54 appointed bedrooms offering stunning views of Derbyshire, together with exceptional standards of guest comfort. The New Bath hotel is the perfect choice from which to explore the outstanding beauty of the Peak District. Additionally, the hotel offers a 2500 sq feet spa by ESPA.